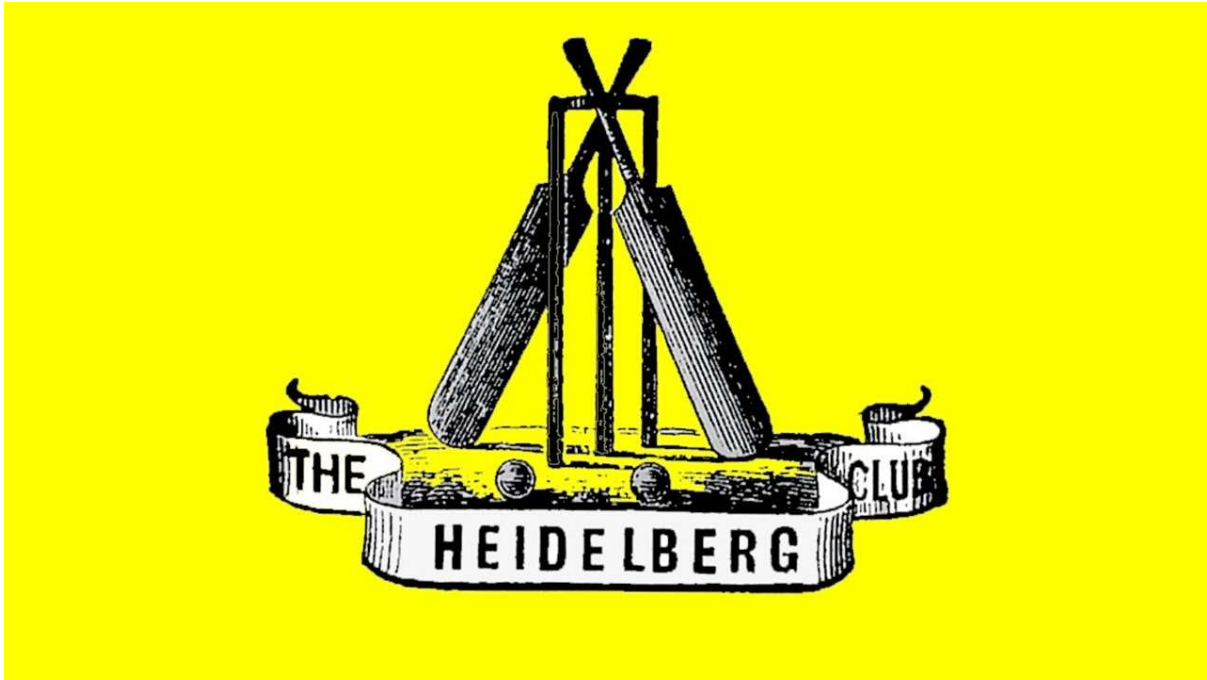




Heidelberg Cricket Club



How to "Live Score" a Cricket Match using iPad's and "MyCricket Live Score" App



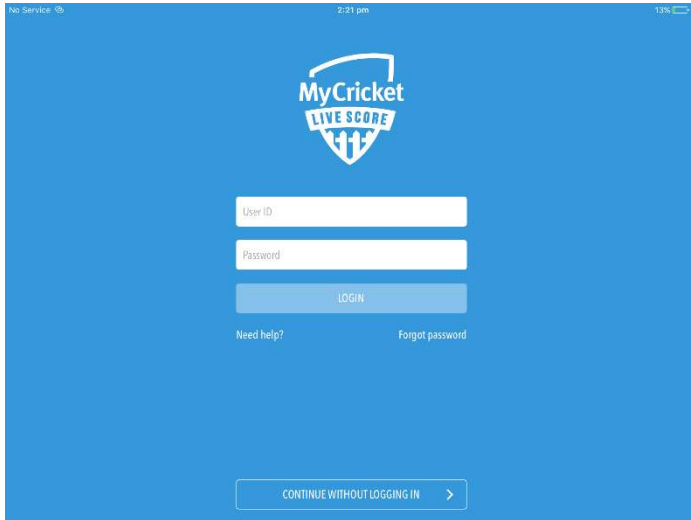
Contents

How to Score a Match.....	3
Step 1 – Open Scoring Application (iPad)	3
Step 2 – Select Match	3
Step 3 – Select Team/Players.....	4
Step 4 – Continue to Match Setup.....	4
Step 5 – Match Settings	5
Step 6 – Match Settings - Reference.....	5
Step 7 – Enter Toss Result.....	6
Step 8 – Select Opening Batters.....	6
Appendix A – Game Settings Reference Cards	7
Match Settings - U10 Boys / U13 (Level 1) Girls	7
Match Settings - U12 Boys	8
Match Settings - U14 – U18 Boys.....	9
Match Settings - U15 (Level 2) Girls.....	10
Match Settings - U17 (Level 3) Girls.....	11
Match Settings - Senior Women	12
Match Settings - Senior Men	13

How to Score a Match

Step 1 – Open Scoring Application (iPad)

Log in to MyCricket Live Scorer App using your club-assigned scorer's login. If you do not have the app, you can download it here for iPad or here for Android.

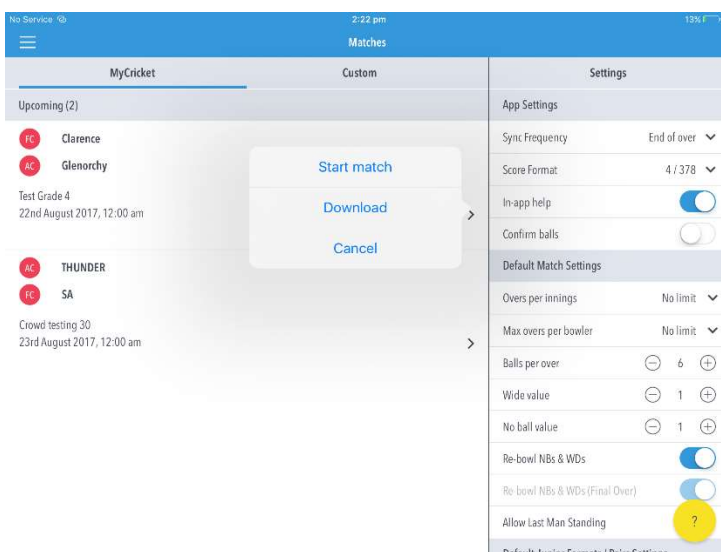


If you do not have a login, please email the HCC Technology Manager with the following details, and one will be created for you :

- **To:** webmaster@heidelbergcricketclub.com
- **Subject:** MyCricket Live Score – Login Request - Team
- In the body of the email, provide :-
 - **Your Full Name :**
 - **Your Email address:**
 - **Your Mobile Phone :**
 - **Which team you are wanting to score (ie “U14 Red – Boys”)**

Step 2 – Select Match

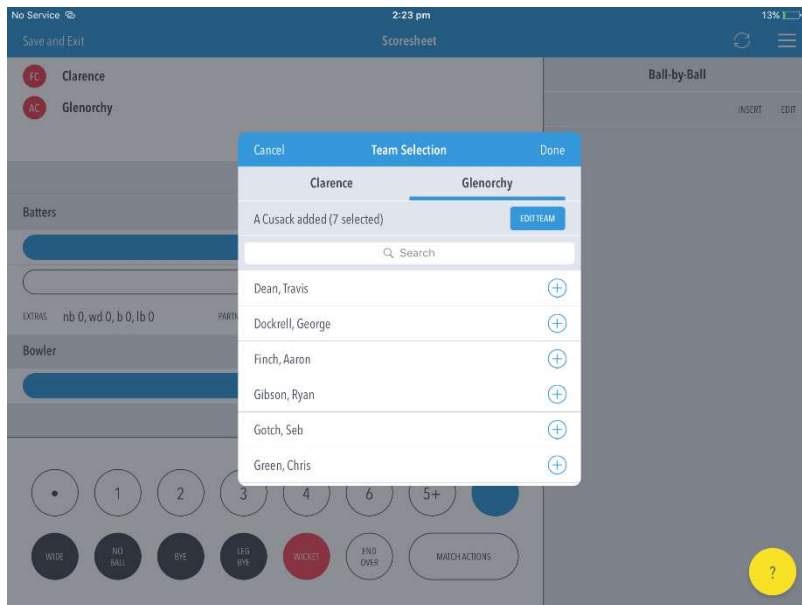
Start upcoming match by clicking arrow in bottom right



Step 3 – Select Team/Players

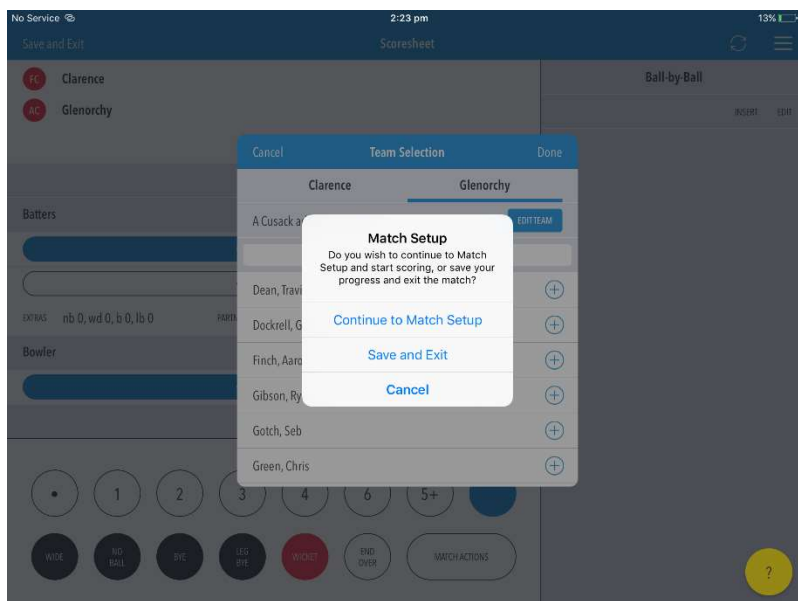
If team is selected in MyCricket, teams will already be populated. If not, click the plus symbol for each player to select the team.

If a player is not appearing it means that most likely they will not be registered to the Association or do not have a role at the club (click [here](#) for help on Team Selection).



Step 4 – Continue to Match Setup

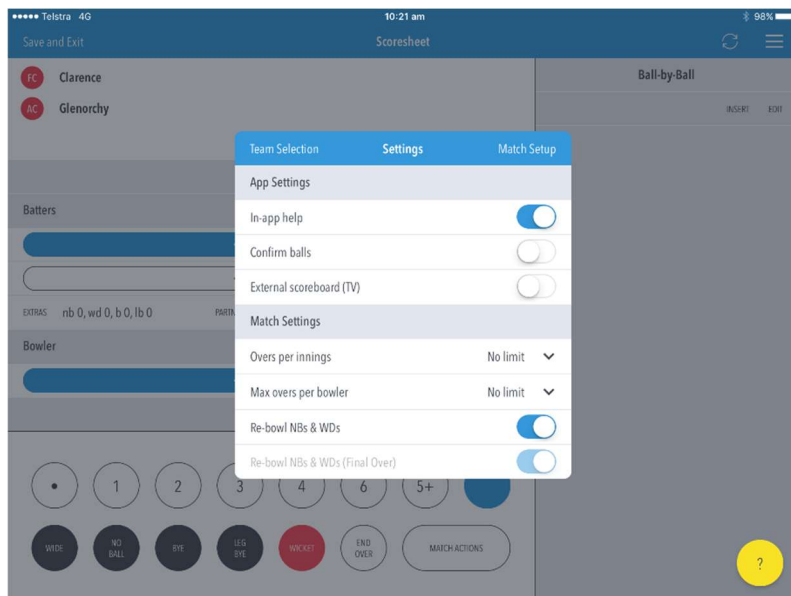
Following selection of teams click continue to match set up



Step 5 – Match Settings

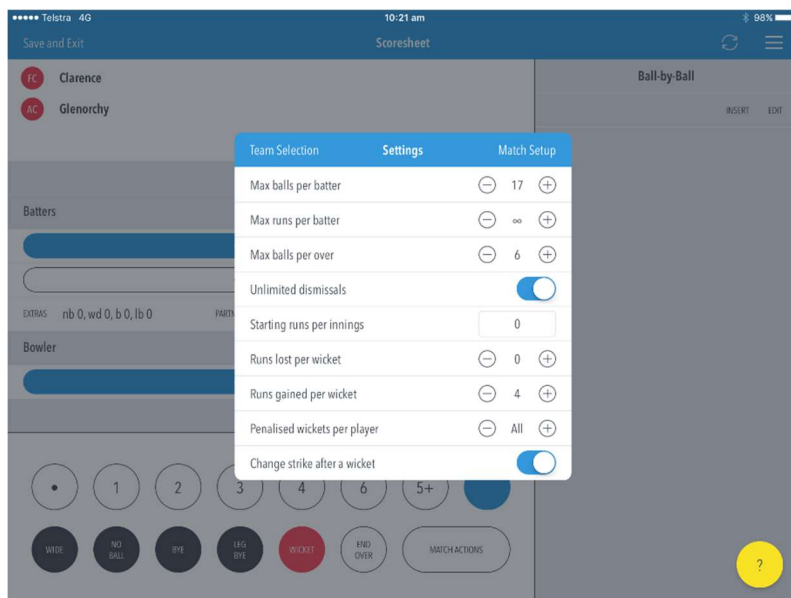
In the settings window scroll down to Junior Formats / Pairs Settings (Junior Formats values begin at Max Balls per batter):

(Refer to table in Appendix "A" for the settings for DVCA Age Groups/Grades)



Step 6 – Match Settings - Reference

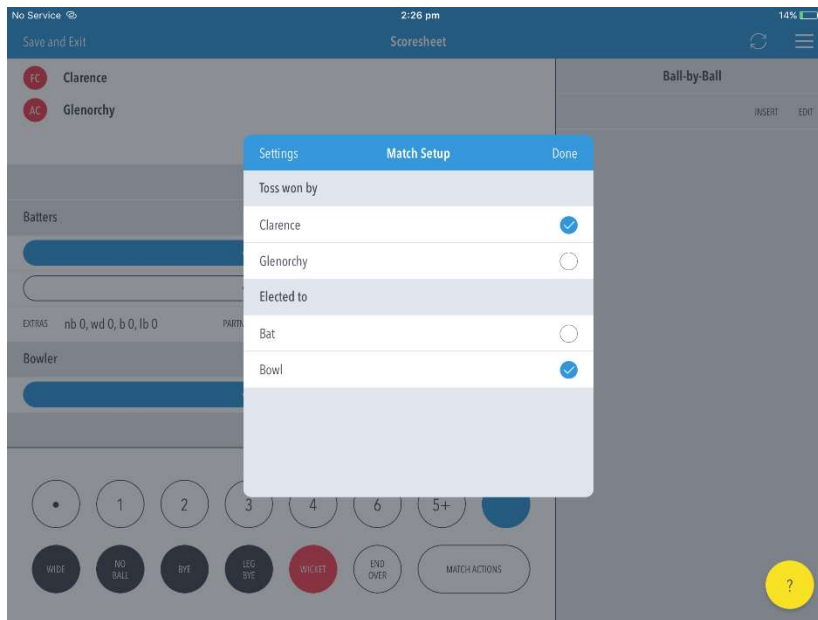
Apply the relevant settings as per "Appendix A"



Note: Default settings may be different, change according to "Appendix A"

Step 7 – Enter Toss Result

Enter Toss Result and begin to score match!



Step 8 – Select Opening Batters

Select the opening (On-Strike Batter) – Click **“Done”**

Select the 2nd Opening Batter (Non-Striker) – Click **“Done”**

Select the Opening Bowler – Click **“Done”**

Begin Scoring the match !

Appendix A – Game Settings Reference Cards

Match Settings - U10 Boys / U13 (Level 1) Girls

App Settings	# of Players in Team					Notes/Info
	5	6	7	8	9	
Sync Frequency	End of Over Each Ball Manual					to reduce 4G data use, set to "End of Over" otherwise, "Each Ball"
Score Format	4 / 378 378 / 4					Default 4 / 378 - no need to change
In-App Help	On Off					Default : On - no need to change
Confirm Balls	On Off					Turn OFF for single-click scoring
Record Batting Minutes	On Off					Default : On - no need to change
Show Full Player Names	On Off					Default : On - no need to change
Show Wagon Wheels	On Off					Default : On – change to Off
Match Settings						
Overs Per Innings	20					Set to 20 (U10 Boys / L1 Girls)
Super Over	Off					"Greyed Out" - Should be set to Off - Do Not change
Max overs per bowler	4					Check - set to 4
Balls per over	6					Check - set to 6
Wide Value	1					Check - set to 1
Wide Value (Final Over)	1					Check - set to 1
No Ball value	1					Check - set to 1
No Ball value (Final Over)	1					Check - set to 1
Re-Bowl NBs	On Off					Set to Off
Re-Bowl NBs (Final Over)	On Off					Set to Off
Re-Bowl WDs	On Off					Set to Off
Re-Bowl WDs - Final Over	On Off					Set to Off
No Balls count as balls faced	On Off					"Greyed out" - Will default to " On " if "Re-Bowls" are set to " OFF "
Wides count as balls faced	On Off					"Greyed out" - Will default to " On " if "Re-Bowls" are set to " OFF "
Overs per pair (Pairs Only)	4					Default is 4 , but does not apply Leave "as is"
Max balls per batter	5 P 24 B	6 P 20 B	7 P 17 B	8 P 15 B	9 P 13 B	Set depending on # of Players in team
Max runs per batter	∞					Check - set to " Unlimited "
Max balls per over	6					Check - set to " 6 "
Allow Last Man Standing	On Off					"Greyed Out" - Do Not change, should be " Off "
Multiple Dismissals	On Off					Check - make sure set to On
Max dismissals per batter	∞					Check - set to " Unlimited "
Starting runs per innings	0					Check - Set to " 0 "
Runs lost per wicket	0					Check - Set to " 0 "
Runs gained per wicket	4					Check - Set to " 4 "
Penalised wickets per player	All					Check, make sure set to " All "
Change strike after a wicket	On Off					Check - make sure set to On

Match Settings - U12 Boys

	# of Players in Team					
	7	8	9	10	11	
App Settings						Notes/Info
Sync Frequency	End of Over Each Ball Manual					to reduce 4G data use, set to "End of Over" otherwise, "Each Ball"
Score Format	4 / 378 378 / 4					Default 4 / 378 - no need to change
In-App Help	On Off					Default : On - no need to change
Confirm Balls	On Off					Turn OFF for single-click scoring
Record Batting Minutes	On Off					Default : On - no need to change
Show Full Player Names	On Off					Default : On - no need to change
Show Wagon Wheels	On Off					Default : On – change to Off
Match Settings						
Overs Per Innings	Refer Notes					U12 White : Set to 20 U12 Red, Teal, Blue: 20 Overs (1 Day) or 40 Overs (2 Day – Split Innings)
Super Over	Off					Should be set to Off
Max overs per bowler	Refer Notes					1 day match – Set to 4 2 day match – Set to 5
Balls per over	6					Check - Set to 6
Wide Value	1					Check - Set to 1
Wide Value (Final Over)	1					Check - Set to 1
No Ball value	1					Check - Set to 1
No Ball value (Final Over)	1					Check - Set to 1
Re-Bowl NBs	On Off					Set to On
Re-Bowl NBs (Final Over)	On Off					Set to On
Re-Bowl WDs	On Off					Set to On
Re-Bowl WDs - Final Over	On Off					Set to On
No Balls count as balls faced	On Off					Set to On (confirm with opposition Scorer)
Wides count as balls faced	On Off					Set to On (confirm with opposition Scorer)
Overs per pair (Pairs Only)	4					Default is 4 , but does not apply Leave "as is"
Max balls per batter	17 / 1D 34 / 2 D	15 / 1D 30 / 2 D	13 / 1D 26 / 2 D	12 / 1D 24 / 2 D	11 / 1D 22 / 2 D	U12 White : Set to 20 U12 Red, Teal, Blue: 20 Overs (1 Day) or 40 Overs (2 Day – Split Innings)
Max runs per batter	∞					Check - set to " Unlimited "
Max balls per over	8					Check - set to " 8 "
Allow Last Man Standing	On Off					Should be set to Off
Multiple Dismissals	On Off					Should be set to Off Setting this to off will disable below options
Max dismissals per batter	N/A – Greyed Out					Does not Apply if "Multiple Dismissals" is Off
Starting runs per innings	N/A – Greyed Out					Does not Apply if "Multiple Dismissals" is Off
Runs lost per wicket	N/A – Greyed Out					Does not Apply if "Multiple Dismissals" is Off
Runs gained per wicket	N/A – Greyed Out					Does not Apply if "Multiple Dismissals" is Off
Penalised wickets per player	N/A – Greyed Out					Does not Apply if "Multiple Dismissals" is Off
Change strike after a wicket	N/A – Greyed Out					Does not Apply if "Multiple Dismissals" is Off

Match Settings - U14 – U18 Boys

App Settings		Notes/Info
Sync Frequency	End of Over Each Ball Manual	to reduce 4G data use, set to "End of Over" otherwise, "Each Ball"
Score Format	4 / 378 378 / 4	Default 4 / 378 - no need to change
In-App Help	On Off	Default : On - no need to change
Confirm Balls	On Off	Turn OFF for single-click scoring
Record Batting Minutes	On Off	Default : On - no need to change
Show Full Player Names	On Off	Default : On - no need to change
Show Wagon Wheels	On Off	Default : On – change to Off
Match Settings		
Overs Per Innings	Refer Notes at Right	1-Day Game : 20 Over Match 2-Day Game : 40 Over Match
Super Over	Off	Should be set to Off
Max overs per bowler	Refer Notes	1 day match – Set to 4 2 day match – Set to 5
Balls per over	6	Check - Set to 6
Wide Value	1	Check - Set to 1
Wide Value (Final Over)	1	Check - Set to 1
No Ball value	1	Check - Set to 1
No Ball value (Final Over)	1	Check - Set to 1
Re-Bowl NBs	On Off	Set to On
Re-Bowl NBs (Final Over)	On Off	Set to On
Re-Bowl WDs	On Off	Set to On
Re-Bowl WDs - Final Over	On Off	Set to On
No Balls count as balls faced	On Off	Set to On (confirm with opposition Scorer)
Wides count as balls faced	On Off	Set to On (confirm with opposition Scorer)
Overs per pair (Pairs Only)	4	Default is 4 , but does not apply Leave "as is"
Max balls per batter	∞	Check - set to "Unlimited"
Max runs per batter	Refer Notes at Right	U14 - 40 (1 Day) or 75 (2 Day) U16/18 - 50 (1 Day) or 100 (2 Day)
Max balls per over	∞	Check - set to " Unlimited "
Allow Last Man Standing	On Off	Should be set to Off
Multiple Dismissals	On Off	Should be set to Off Setting this to off will disable below options
Max dismissals per batter	N/A – Greyed Out	Does not Apply if "Multiple Dismissals" is Off
Starting runs per innings	N/A – Greyed Out	Does not Apply if "Multiple Dismissals" is Off
Runs lost per wicket	N/A – Greyed Out	Does not Apply if "Multiple Dismissals" is Off
Runs gained per wicket	N/A – Greyed Out	Does not Apply if "Multiple Dismissals" is Off
Penalised wickets per player	N/A – Greyed Out	Does not Apply if "Multiple Dismissals" is Off
Change strike after a wicket	N/A – Greyed Out	Does not Apply if "Multiple Dismissals" is Off

Match Settings - U15 (Level 2) Girls

	# of Players in Team					
	7	8	9	10	11	
App Settings						Notes/Info
Sync Frequency	End of Over Each Ball Manual					to reduce 4G data use, set to "End of Over" otherwise, "Each Ball"
Score Format	4 / 378 378 / 4					Default 4 / 378 - no need to change
In-App Help	On Off					Default : On - no need to change
Confirm Balls	On Off					Turn OFF for single-click scoring
Record Batting Minutes	On Off					Default : On - no need to change
Show Full Player Names	On Off					Default : On - no need to change
Show Wagon Wheels	On Off					Default : On - change to Off
Match Settings						
Overs Per Innings	20					Check – Set to 20 Overs (1 Day Match)
Super Over	Off					Check - set to Off
Max overs per bowler	4					Check - set to 4
Balls per over	6					Check - Set to 6
Wide Value	1					Check - Set to 1
Wide Value (Final Over)	1					Check - Set to 1
No Ball value	1					Check - Set to 1
No Ball value (Final Over)	1					Check - Set to 1
Re-Bowl NBs	On Off					Set to On
Re-Bowl NBs (Final Over)	On Off					Set to On
Re-Bowl WDs	On Off					Set to On
Re-Bowl WDs - Final Over	On Off					Set to On
No Balls count as balls faced	On Off					Set to On (confirm with opposition Scorer)
Wides count as balls faced	On Off					Set to On (confirm with opposition Scorer)
Overs per pair (Pairs Only)	4					Default is 4 , but does not apply Leave "as is"
Max balls per batter	17	15	13	12	11	Set depending on # of Players in team
Max runs per batter	∞					Check - set to " Unlimited "
Max balls per over	8					Check - set to " 8 "
Allow Last Man Standing	On Off					"Greyed Out" - Do Not change, should be " Off "
Multiple Dismissals	On Off					Should be set to Off Setting this to off will disable below options
Max dismissals per batter	N/A – Greyed Out					Does not Apply if "Multiple Dismissals" is Off
Starting runs per innings	N/A – Greyed Out					Does not Apply if "Multiple Dismissals" is Off
Runs lost per wicket	N/A – Greyed Out					Does not Apply if "Multiple Dismissals" is Off
Runs gained per wicket	N/A – Greyed Out					Does not Apply if "Multiple Dismissals" is Off
Penalised wickets per player	N/A – Greyed Out					Does not Apply if "Multiple Dismissals" is Off
Change strike after a wicket	N/A – Greyed Out					Does not Apply if "Multiple Dismissals" is Off

Match Settings - U17 (Level 3) Girls

App Settings		Notes/Info
Sync Frequency	End of Over Each Ball Manual	to reduce 4G data use, set to "End of Over" otherwise, "Each Ball"
Score Format	4 / 378 378 / 4	Default 4 / 378 - no need to change
In-App Help	On Off	Default : On - no need to change
Confirm Balls	On Off	Turn OFF for single-click scoring
Record Batting Minutes	On Off	Default : On - no need to change
Show Full Player Names	On Off	Default : On - no need to change
Show Wagon Wheels	On Off	Default : On – change to Off
Match Settings		
Overs Per Innings	20	Check – Set to 20 Overs (1 Day Match)
Super Over	Off	Check - set to Off
Max overs per bowler	4	Check - set to 4
Balls per over	6	Check - Set to 6
Wide Value	1	Check - Set to 1
Wide Value (Final Over)	1	Check - Set to 1
No Ball value	1	Check - Set to 1
No Ball value (Final Over)	1	Check - Set to 1
Re-Bowl NBs	On Off	Set to On
Re-Bowl NBs (Final Over)	On Off	Set to On
Re-Bowl WDs	On Off	Set to On
Re-Bowl WDs - Final Over	On Off	Set to On
No Balls count as balls faced	On Off	Set to On
Wides count as balls faced	On Off	Set to On
Overs per pair (Pairs Only)	4	Default is 4 , but does not apply Leave "as is"
Max balls per batter	∞	Check - set to " Unlimited "
Max runs per batter	Refer Notes at Right	Check - Set to 40
Max balls per over	∞	Check - set to " Unlimited "
Allow Last Man Standing	On Off	Check - Set to Off
Multiple Dismissals	On Off	Check - Set to Off Setting this to off will disable below options
Max dismissals per batter	N/A – Greyed Out	Does not Apply if "Multiple Dismissals" is Off
Starting runs per innings	N/A – Greyed Out	Does not Apply if "Multiple Dismissals" is Off
Runs lost per wicket	N/A – Greyed Out	Does not Apply if "Multiple Dismissals" is Off
Runs gained per wicket	N/A – Greyed Out	Does not Apply if "Multiple Dismissals" is Off
Penalised wickets per player	N/A – Greyed Out	Does not Apply if "Multiple Dismissals" is Off
Change strike after a wicket	N/A – Greyed Out	Does not Apply if "Multiple Dismissals" is Off

Match Settings - Senior Women

App Settings		Notes/Info
Sync Frequency	End of Over Each Ball Manual	to reduce 4G data use, set to "End of Over" otherwise, "Each Ball"
Score Format	4 / 378 378 / 4	Default 4 / 378 - no need to change
In-App Help	On Off	Default : On - no need to change
Confirm Balls	On Off	Turn OFF for single-click scoring
Record Batting Minutes	On Off	Default : On - no need to change
Show Full Player Names	On Off	Default : On - no need to change
Show Wagon Wheels	On Off	Default : On – change to Off
Match Settings		
Overs Per Innings	Refer Notes at Right	Spring Season : 20 Over Match Summer Season : 30 Over Match
Super Over	Off	Check - should be set to Off
Max overs per bowler	Refer Notes at Right	Spring Season : 4 (20 Over Match) Summer Season : 6 (30 Over Match)
Balls per over	6	Check - make sure set to 6
Wide Value	1	Check - make sure set to 1
Wide Value (Final Over)	1	Check - make sure set to 1
No Ball value	1	Check - make sure set to 1
No Ball value (Final Over)	1	Check - make sure set to 1
Re-Bowl NBs	On Off	Set to On
Re-Bowl NBs (Final Over)	On Off	Set to On
Re-Bowl WDs	On Off	Set to On
Re-Bowl WDs - Final Over	On Off	Set to On
No Balls count as balls faced	On Off	Set to On
Wides count as balls faced	On Off	Set to On
Overs per pair (Pairs Only)	4	Default is 4 , but does not apply Leave "as is"
Max balls per batter	∞	Check - set to " Unlimited "
Max runs per batter	Refer Notes at Right	Spring Season : 35 (20 Over Match) Summer Season : 50 (30 Over Match)
Max balls per over	6	Check - set to " Unlimited "
Allow Last Man Standing	On Off	Check - Set to Off
Multiple Dismissals	On Off	Check - Set to Off Setting this to off will disable below options
Max dismissals per batter	N/A – Greyed Out	Does not Apply if "Multiple Dismissals" is Off
Starting runs per innings	N/A – Greyed Out	Does not Apply if "Multiple Dismissals" is Off
Runs lost per wicket	N/A – Greyed Out	Does not Apply if "Multiple Dismissals" is Off
Runs gained per wicket	N/A – Greyed Out	Does not Apply if "Multiple Dismissals" is Off
Penalised wickets per player	N/A – Greyed Out	Does not Apply if "Multiple Dismissals" is Off
Change strike after a wicket	N/A – Greyed Out	Does not Apply if "Multiple Dismissals" is Off

Match Settings - Senior Men (E Grade and above – inc. Shield Games)

App Settings		Notes/Info
Sync Frequency	End of Over <u>Each Ball</u> Manual	to reduce 4G data use, set to "End of Over" otherwise, "Each Ball"
Score Format	<u>4 / 378</u> 378 / 4	Default 4 / 378 - no need to change
In-App Help	<u>On</u> Off	Default : <u>On</u> - no need to change
Confirm Balls	On <u>Off</u>	Turn OFF for single-click scoring
Record Batting Minutes	<u>On</u> Off	Default : <u>On</u> - no need to change
Show Full Player Names	<u>On</u> Off	Default : <u>On</u> - no need to change
Show Wagon Wheels	On <u>Off</u>	Default : <u>On</u> – change to Off
Match Settings		
Overs Per Innings	Refer Notes at Right	1-Day Game : <u>40</u> Over Match 2-Day Game : <u>80</u> Over Match
Super Over	Off	Check - set to Off
Max overs per bowler	Refer Notes at Right	1-Day Game : <u>8</u> (40 Over Match) 2-Day Game : <u>∞</u> (80 Over Match)
Balls per over	6	Check - set to <u>6</u>
Wide Value	1	Check - set to <u>1</u>
Wide Value (Final Over)	1	Check - set to <u>1</u>
No Ball value	1	Check - set to <u>1</u>
No Ball value (Final Over)	1	Check - set to <u>1</u>
Re-Bowl NBs	<u>On</u> Off	Set to <u>On</u>
Re-Bowl NBs (Final Over)	<u>On</u> Off	Set to <u>On</u>
Re-Bowl WDs	<u>On</u> Off	Set to <u>On</u>
Re-Bowl WDs - Final Over	<u>On</u> Off	Set to <u>On</u>
No Balls count as balls faced	<u>On</u> Off	Set to <u>On</u>
Wides count as balls faced	<u>On</u> Off	Set to <u>On</u>
Overs per pair (Pairs Only)	4	Default is <u>4</u> , but does not apply in DVCA - leave "as is"
Max balls per batter	∞	Check - set to " Unlimited "
Max runs per batter	∞	Check - set to " Unlimited "
Max balls per over	∞	Check - set to " Unlimited "
Allow Last Man Standing	On <u>Off</u>	Should be set to Off
Multiple Dismissals	On <u>Off</u>	Should be set to Off Setting this to off will disable below options
Max dismissals per batter	N/A – Greyed Out	Does not Apply if "Multiple Dismissals" is Off
Starting runs per innings	N/A – Greyed Out	Does not Apply if "Multiple Dismissals" is Off
Runs lost per wicket	N/A – Greyed Out	Does not Apply if "Multiple Dismissals" is Off
Runs gained per wicket	N/A – Greyed Out	Does not Apply if "Multiple Dismissals" is Off
Penalised wickets per player	N/A – Greyed Out	Does not Apply if "Multiple Dismissals" is Off
Change strike after a wicket	N/A – Greyed Out	Does not Apply if "Multiple Dismissals" is Off

Match Settings - Senior Men (F Grade and below)

App Settings		Notes/Info
Sync Frequency	End of Over Each Ball Manual	to reduce 4G data use, set to "End of Over" otherwise, "Each Ball"
Score Format	4 / 378 378 / 4	Default 4 / 378 - no need to change
In-App Help	On Off	Default : On - no need to change
Confirm Balls	On Off	Turn OFF for single-click scoring
Record Batting Minutes	On Off	Default : On - no need to change
Show Full Player Names	On Off	Default : On - no need to change
Show Wagon Wheels	On Off	Default : On – change to Off
Match Settings		
Overs Per Innings	Refer Notes at Right	1-Day Game : 35 Over Match 2-Day Game : 70 Over Match
Super Over	Off	Check - set to Off
Max overs per bowler	Refer Notes at Right	1-Day Game : 7 (35 Over Match) 2-Day Game : ∞ (70 Over Match)
Balls per over	6	Check - set to 6
Wide Value	1	Check - set to 1
Wide Value (Final Over)	1	Check - set to 1
No Ball value	1	Check - set to 1
No Ball value (Final Over)	1	Check - set to 1
Re-Bowl NBs	On Off	Set to On
Re-Bowl NBs (Final Over)	On Off	Set to On
Re-Bowl WDs	On Off	Set to On
Re-Bowl WDs - Final Over	On Off	Set to On
No Balls count as balls faced	On Off	Set to On
Wides count as balls faced	On Off	Set to On
Overs per pair (Pairs Only)	4	Default is 4 , but does not apply in DVCA - leave "as is"
Max balls per batter	∞	Check - set to " Unlimited "
Max runs per batter	∞	Check - set to " Unlimited "
Max balls per over	∞	Check - set to " Unlimited "
Allow Last Man Standing	On Off	Should be set to Off
Multiple Dismissals	On Off	Should be set to Off Setting this to off will disable below options
Max dismissals per batter	N/A – Greyed Out	Does not Apply if "Multiple Dismissals" is Off
Starting runs per innings	N/A – Greyed Out	Does not Apply if "Multiple Dismissals" is Off
Runs lost per wicket	N/A – Greyed Out	Does not Apply if "Multiple Dismissals" is Off
Runs gained per wicket	N/A – Greyed Out	Does not Apply if "Multiple Dismissals" is Off
Penalised wickets per player	N/A – Greyed Out	Does not Apply if "Multiple Dismissals" is Off
Change strike after a wicket	N/A – Greyed Out	Does not Apply if "Multiple Dismissals" is Off